



COMPANY PROFILE

www.apollo-construction.com





Company Mission & Philosophy

we are dedicated to transforming projects into durable solutions. Our mission is to deliver exceptional craftsmanship and uncompromising quality in every project we undertake. We foster strong partnerships with our employees, clients, and communities, driven by integrity, safety, and accountability. With each blueprint we bring to life, we aim to build not just buildings, but trust, progress, and a better future for generations to come.





WHY US?

One Team, One Stop Solution

As a full-service General Contractor since 1987, we eliminate subcontractor chaos by providing seamless coordination, direct accountability, and faster project delivery from Blueprint to Build Up.

37 Years of Florida Expertise

Our specialized experience across Florida commercial and industrial construction enables us to proactively anticipate challenges and deliver solutions without compromising quality or timelines.





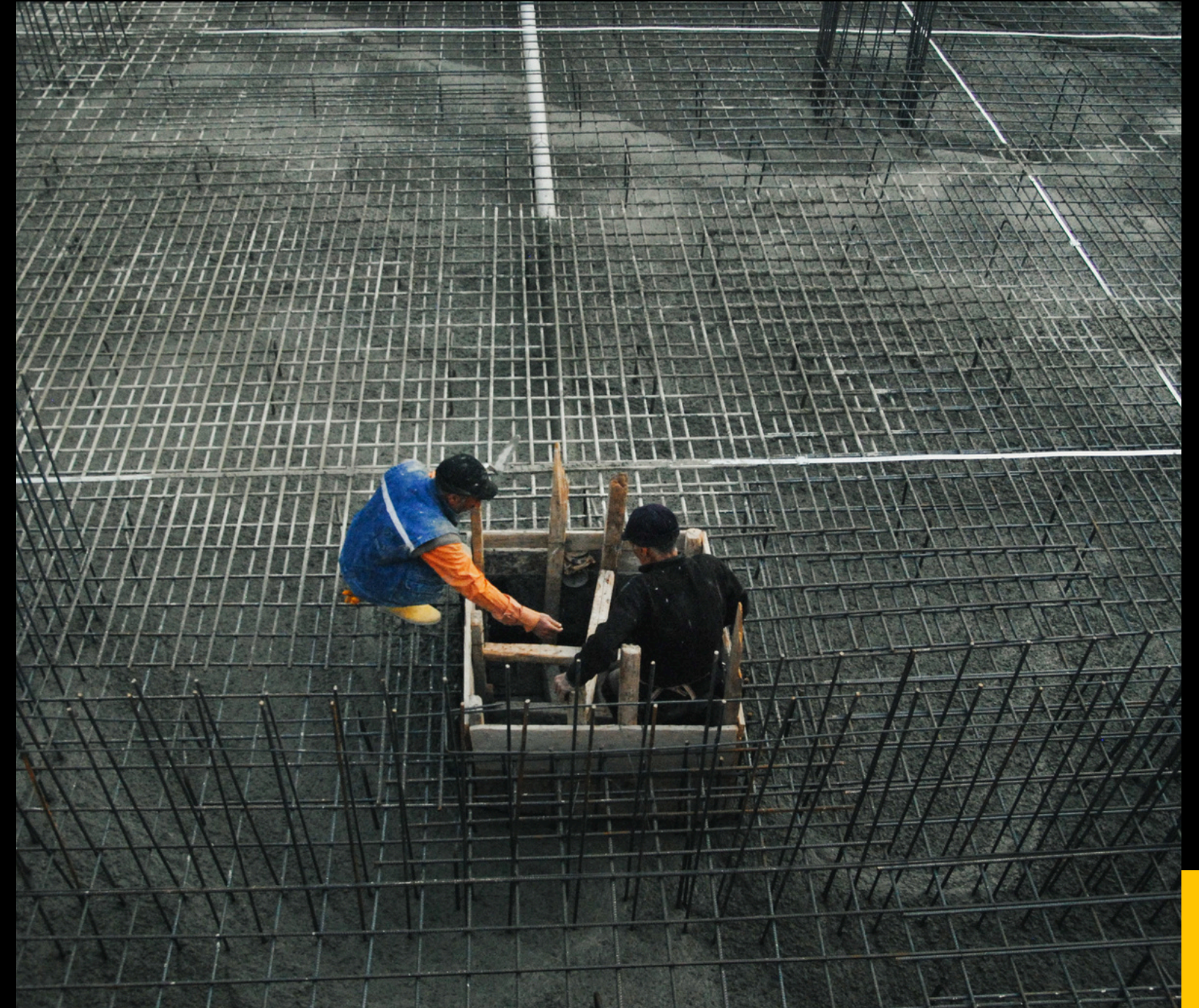
WHY US?

Union Workforce Advantage

Apollo's certified Florida union teams provide strategic benefits, reducing construction risks, minimizing change orders, and ensuring long-term value for partners.

Licensed in All 67 Florida Counties

We hold active licensing across every county in Florida, ensuring seamless project execution statewide.





Our Expertise

Core Expertise

- Mechanical
- Plumbing
- Carpentry
- Masonry
- Other specialized trades

Services Provided

- New construction
- Complex retrofits
- Specialty work



Our Expertise

Key Strengths

- Certified union professionals
- Precision workmanship
- Versatile project capabilities
- Strong focus on quality and safety



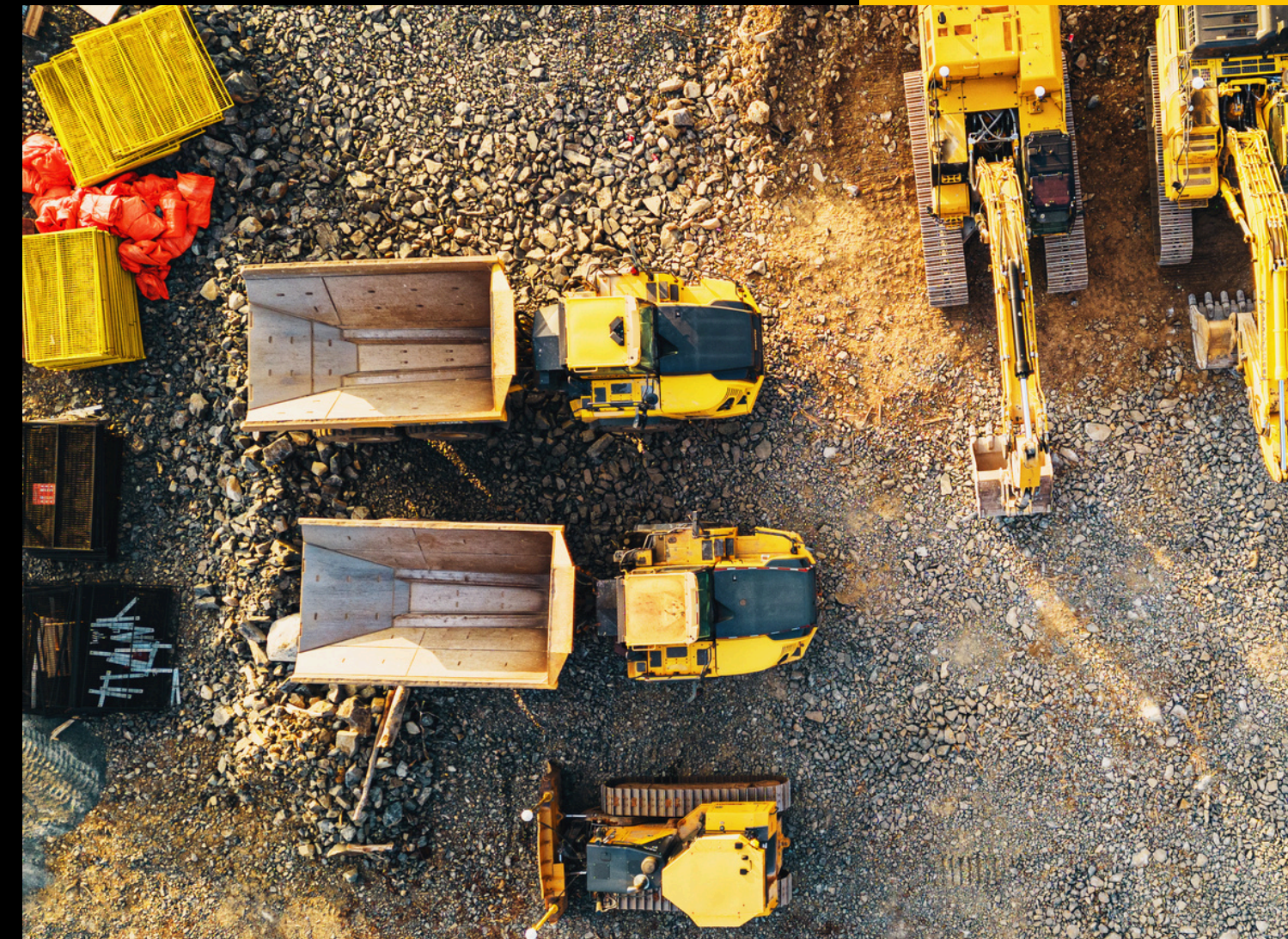


Geographic locations

Apollo Construction serves as a connecting force across Florida's major metropolitan areas

- Hillsborough
- Pinellas
- Pasco
- Manatee
- Sarasota
- West Central Florida

We also have the capability to take on select projects in other Florida regions.
Please contact us to discuss your specific location needs





Our Work



Port of Manatee

Piney Point Phosphate Plant



Industrial Construction

- Manufacturing facilities
- Power plants and energy facilities
- Refineries and chemical processing plants
- Warehouses and distribution centers

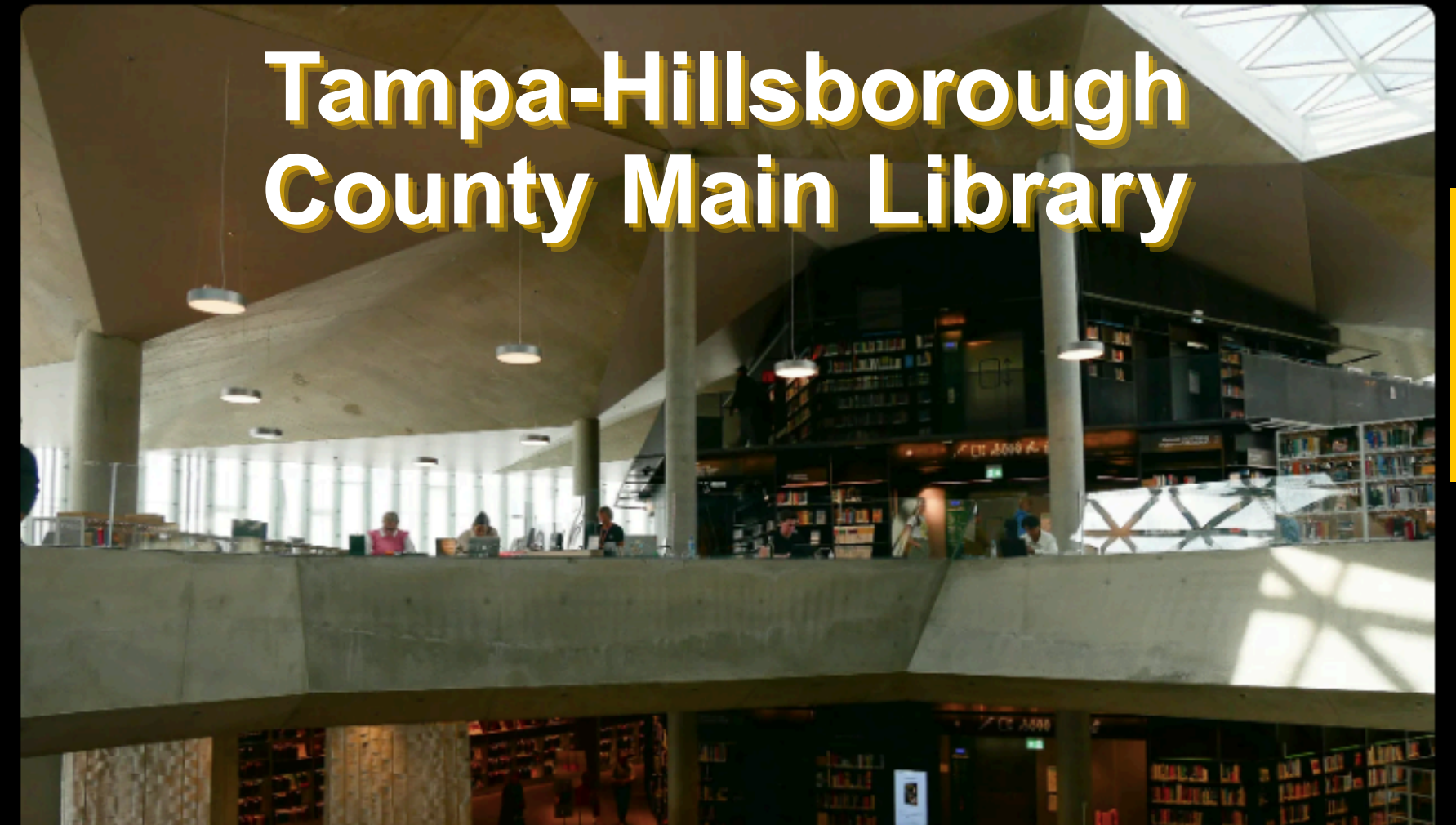




Our Work



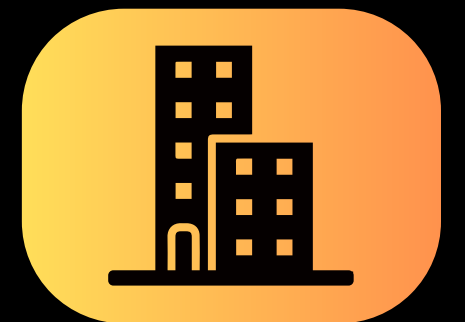
Springhead Elementary School



Tampa-Hillsborough County Main Library

Institutional

Administrative facilities
Athletic and recreational structures
Cafeterias and assembly halls
and mechanical system upgrades





Our Services

**General
Contracting**

**Trespa
Exterior
Cladding &
Architectural
Solutions**

**Mechanical
Solutions**

**Concrete
Forming &
Placement**

**Custom
Metal
Fabrication**

**Masonry,
Tile &
Paving**

**Industrial
Construction
&
Maintenance**

**Post
Construction
Guardianship**

**Plumbing
Solutions**

**Full
Construction
Management
Service**

Industries We **serve**



Commercial
enterprises



Industrial
manufacturing



Utility and water
treatment facilities



Educational
institutions



Healthcare facilities



Government agencies



Business Approach



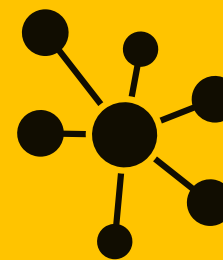
Relationship Building:
Fostering trust and
collaboration with all
stakeholders



Community Focus:
Commitment to shared
progress and collective
development



Innovation: Bringing creative
thinking to complex
construction challenges



Regional Connectivity:
Linking stakeholders,
suppliers, and neighborhoods
across Florida

Get To Know Us Better

From Blueprint To Buildup



LinkedIn

<https://www.linkedin.com/company/apollo-construction-engineering-services/>



TikTok

<https://www.tiktok.com/@apolloconstruction?lang=en>



Instagram

<https://www.instagram.com/apolooconstruction/>



Ready to build with general contracting experts?

Your Next Project Starts Here



Call us: (850) 4-APOLLO



info@apollo-construction.com



Monday - Friday: 7:00 AM - 4:00 PM



For emergency services, please call our 24/7

line: (850) 427-6556

